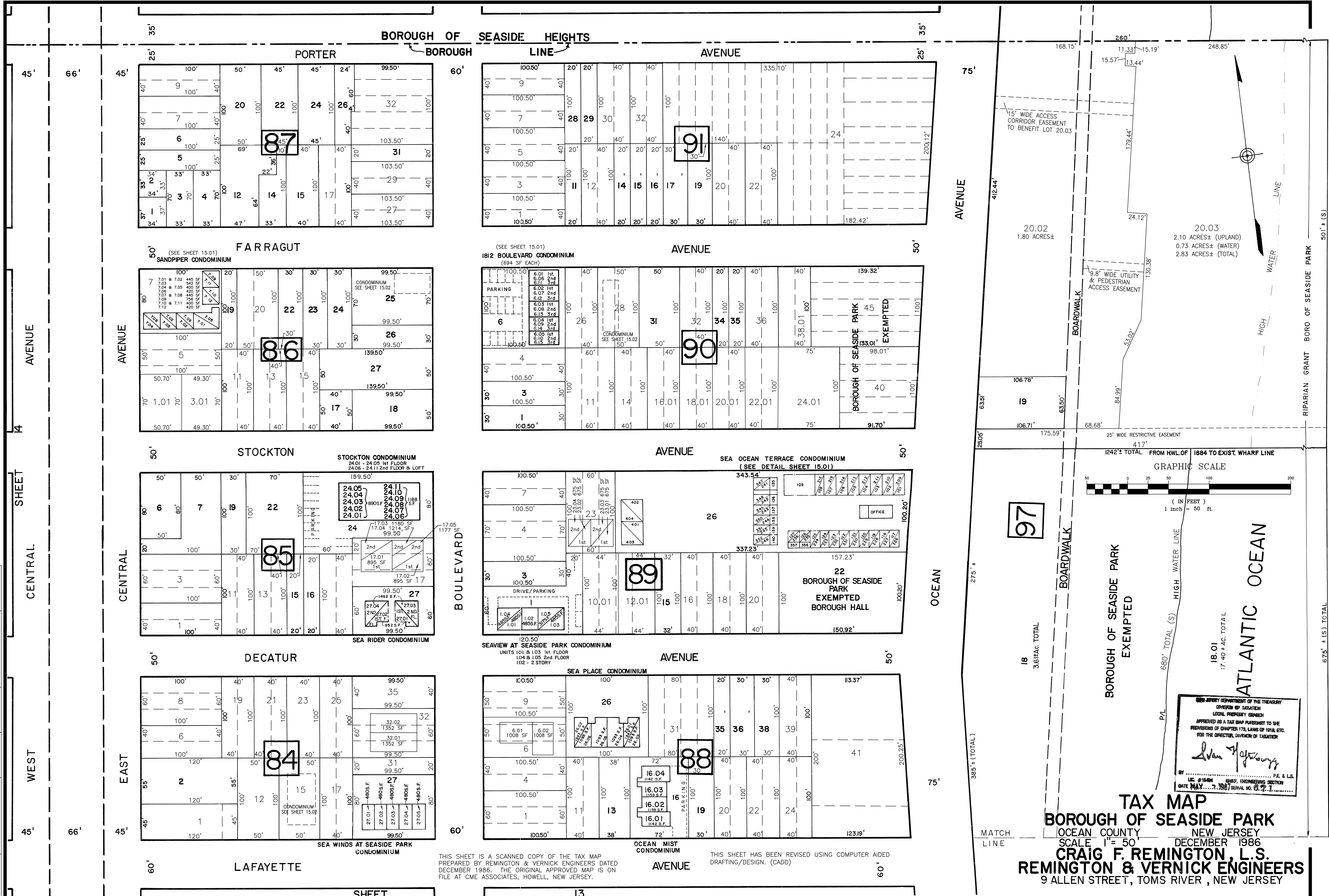


DATE	REVISION	L.S. NAME	LIC. #
FEB. 1992	THOMAS CRADER	21782	42627
APRIL 1992	THOMAS CRADER	21782	42627
JAN. 1993	THOMAS CRADER	21782	42627
JULY 2009	MICHAEL MCGUIRE	38338	
JAN. 2016	CHARLES E. ADAMSON	42627	
JUN. 2016	CHARLES E. ADAMSON	42627	
NOV. 2016	CHARLES E. ADAMSON	42627	
DEC. 2019	CHARLES E. ADAMSON	42627	
SEPT. 2020	CHARLES E. ADAMSON	42627	
DEC. 2021	CHARLES E. ADAMSON	42627	



THIS SHEET IS A SCANNED COPY OF THE TAX MAP PREPARED BY REMINGTON & VERNICK ENGINEERS DATED DECEMBER 1986. THE ORIGINAL APPROVED MAP IS ON FILE AT CME ASSOCIATES, HOWELL, NEW JERSEY.

THIS SHEET HAS BEEN REVISED USING COMPUTER AIDED DRAFTING/DESIGN. (CADD)

TAX MAP
BOROUGH OF SEASIDE PARK
 OCEAN COUNTY, NEW JERSEY
 SCALE 1" = 50'
CRAIG F. REMINGTON, L.S.
REMINGTON & VERNICK ENGINEERS
 9 ALLEN STREET, TOMS RIVER, NEW JERSEY

NEW JERSEY DEPARTMENT OF THE TREASURY
 DIVISION OF TAXATION
 LOCAL PROPERTY TAXES
 APPROVED AS A TAX MAP PURSUANT TO THE PROVISIONS OF CHAPTER 173, LAWS OF 1918, ETC. FOR THE DIRECTOR, DIVISION OF TAXATION
John J. [Signature]
 BY [Signature] CHIEF, ENGINEERING SECTION
 DATE MAY 7, 1986 SERIAL NO. 67,711